

From: Bob Oelberg [mailto:bob@oelbergla.com]
Sent: Wednesday, February 01, 2017 6:32 PM
To: Kevin Rothrock <kevin@townofblowingrocknc.gov>
Cc: Sr., John G. Aldridge <john.aldrigesr@dentons.com>; Jim Pitts <jpitts@brmountainclub.com>
Subject: Plan and presentation submittal for Laurel Lane, e-mail 1 of 2

Dear Kevin,

Attached, please find the plans and presentation submittal for the Laurel Lane median landscape project in Blowing Rock. This is intended for review and presentation to the Town Council at their February 14th meeting. The actual plan submittal drawings are called 'Laurel Lane Median [1-3] of 3 2-01-17. So there are just three plan submittal drawings.

The presentation is intended to include these three plan submittal drawings as well as four additional exhibits which are attached to an e-mail immediately following this.

Please don't hesitate to call if there are any questions.

Bob

Robert N Oelberg ASLA PA
[782 Little Laurel Rd Ext Boone, NC 28607](mailto:bob@oelbergla.com)
(828) 264-4149 (O) (828) 406-8218 (C)
bob@oelbergla.com www.oelbergla.com



Azythium filix-lamba



Carex lasiocarpa 'Bunny Blue'



Heuchera 'Witching Fire'



Heuchera villosa 'Carmel'



Matteuccia struthioferens



Cornus rugelii



Rhododendron calendulaceum



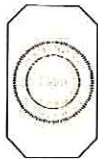
Tharalia cordifolia 'Brandynine'



Rhododendron 'PJM'



Rhododendron maximum



Robert N Oelberg ASLA PA
Landscape Planning:
782 Little Laurel Rd Ext
Boone, NC 28607
Website: www.oelberg.com
E-Mail: bob@oelberg.com
(828) 264-4149 (O) (828) 406-8218 (C)

782 Little Laurel Rd Ext
Boone, NC 28607
Website: www.oelberg.com
E-Mail: bob@oelberg.com
(828) 264-4149 (O) (828) 406-8218 (C)

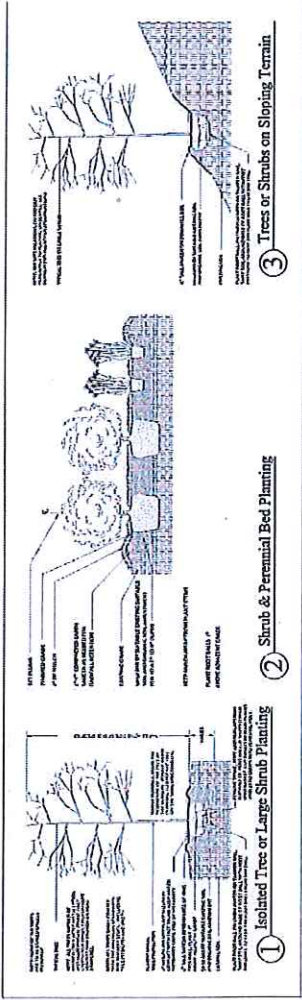
Laurel Lane Median Landscape Plan

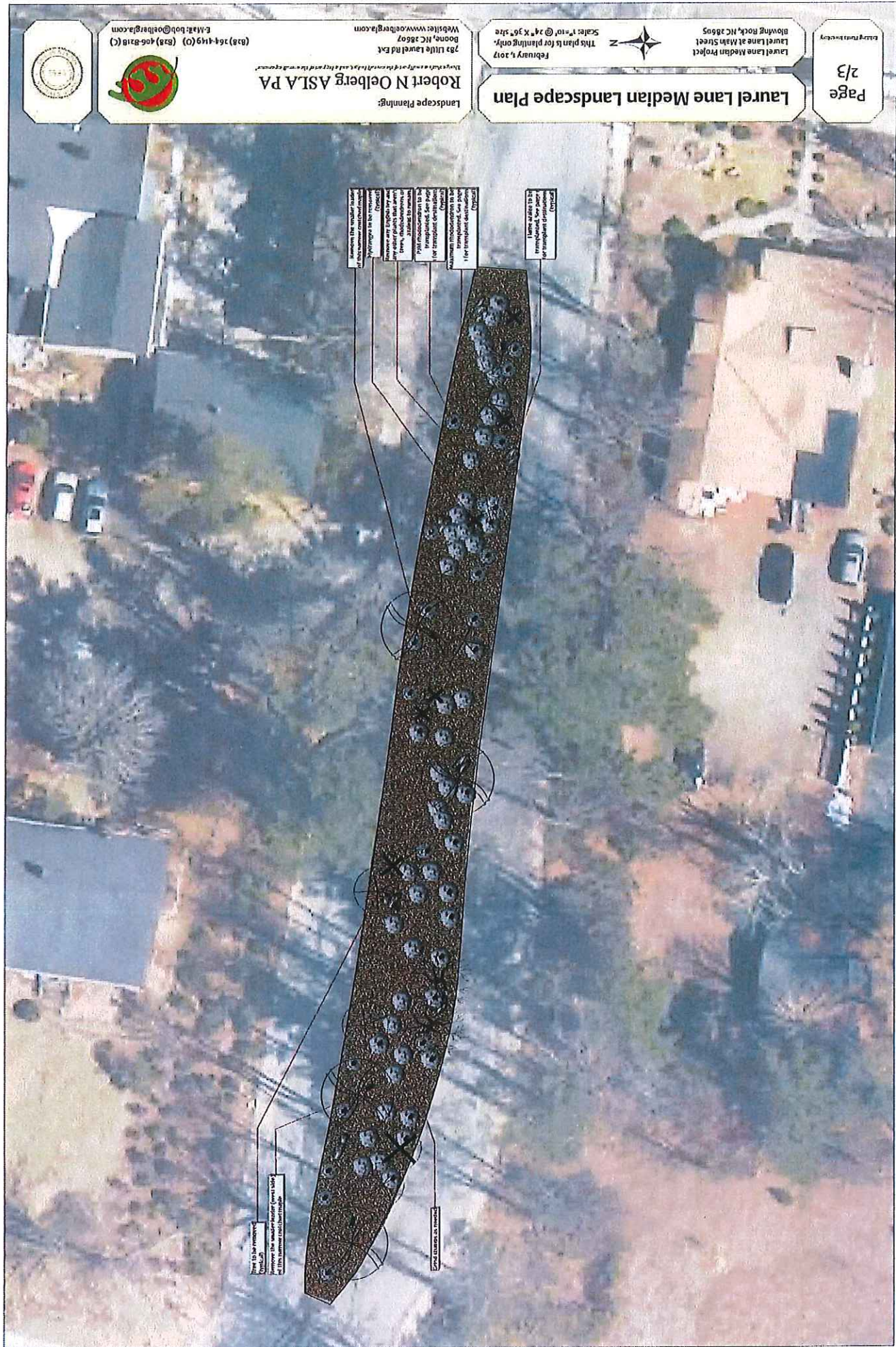
February, 2017
Not to Scale

The accompanying plans for planting only,
Blowing Rock, NC 28605
Laurel Lane Median Project
1514 N. Kings
3/3

Planting Plan Notes

- The Landscape Contractor or any other installing planter for this project, are responsible for understanding the location of all underground utilities prior to digging. Call 8-1-1 or 31600 (630-949) for the North Carolina One-Call Center at least 48 hours prior to digging for an exact location. The NC One-Call Center location for Blue Ridge Electric, Charlotte, Skyline, AT&T and Frontier Electric. The Contractor is responsible for contacting any utility not served by the NC One-Call Center.
- Plants are to be installed with topsoil 10% applied flower and 30% topsoil over prepared any manure shall be placed at least 4" deep in landscape planting beds, and then worked to a depth of 8" to 10". Contractor must ensure that the topsoil is well mixed with existing soils when backfilling trees and large shrubs that are in existing beds. Planting beds in any area where plants are massed together with planting typically 4" on-center or closer. Where plants are further apart, they are considered isolated plantings.
- Plants, beds and tree-trunking trunks and shrubs are to be mulched with double-shredded hardwood mulch or shredded leaves, as specified on the plans, unless otherwise directed by the Owner.
- All plant materials are to conform with the American Association of Nurseries (AAN), Standard for Nursery Stock (SANS) edition.
- Plant species substitutions by the Contractor are discouraged, unless otherwise directed by the Owner. All plants specified are carried by local wholesale growers, by regional growers who regularly deliver to the area during the growing season, or by regional growers who ship UPS or FedEx priority parcels. All plants are not always available. When plant availability is a problem, the Contractor should contact the Landscape Architect for an alternative. Plants not available to the plans, Contractor is to contact the Landscape Architect.
- Where on-site conditions do not allow for the plan to be installed as drawn, requesting legal amendments to the plans. Contractor is to contact the landscape architect unless otherwise directed by the Owner. This includes relocation of plants to avoid conflicts with utilities.
- The Contractor is responsible for watering plant material until final acceptance by the Owner, unless otherwise agreed upon with the Owner.
- Plants to be installed must meet the minimum standards set forth in the above-referenced Standard for Nursery Stock. For Nursery Stock are subject to replacement by the Contractor at the earliest time that is reasonable and practical for planting.
- The Contractor is to be paid back to support the top of root balls, and the tops of wire baskets cut off or bent back into the planting holes.
- Planting holes for shrubs and small trees which are not in planting beds should be approximately twice the diameter of the root ball, but approximately the same depth as the root ball. Holes for larger trees need twice the diameter, but large enough to secure backfill contact with the entire buried base of the root ball. The soil fill material should consist of 50% existing suitable soil and 50% of the organic planting mix specified in #2, above.
- Where the Contractor is required to install a drainage pattern, the Contractor is to install a drainage pattern to the outside of the planting bed. The drainage pattern shall be by grading, drainage pipes, or drainage tiles. When soil amendments are added to planting beds, the amendments are to be worked down to a depth of 6" to 8", and then amended to a finish consistent with the surrounding un-amended areas.
- The base information underlying this plan is sourced from a composite of aerial orthorectified, on-site measurements, with tape measure and/or laser levels and/or other surveying instruments. Although this base information is extremely accurate for the purpose of a planting plan, it is not intended to be used for any other purposes than landscape and landscape installation, and it is not to be used as a replacement for the consequences of





Items to be removed:
Remove the weather vane from the
pole. Remove the light fixture.

Place elements in landscape

Items to be placed:
New plantings, see plan
for transplant specifications.

Callouts:
1. Remove the weather vane from the pole.
2. Remove the light fixture from the pole.
3. Place the new plantings in the landscape.
4. Place the new plantings in the landscape.
5. Place the new plantings in the landscape.
6. Place the new plantings in the landscape.
7. Place the new plantings in the landscape.
8. Place the new plantings in the landscape.
9. Place the new plantings in the landscape.
10. Place the new plantings in the landscape.

Laurel Lane Median Landscape Plan

January 5, 2017
This plan is for planting only.
Scale: 1"=10' @ 34" X 36" size



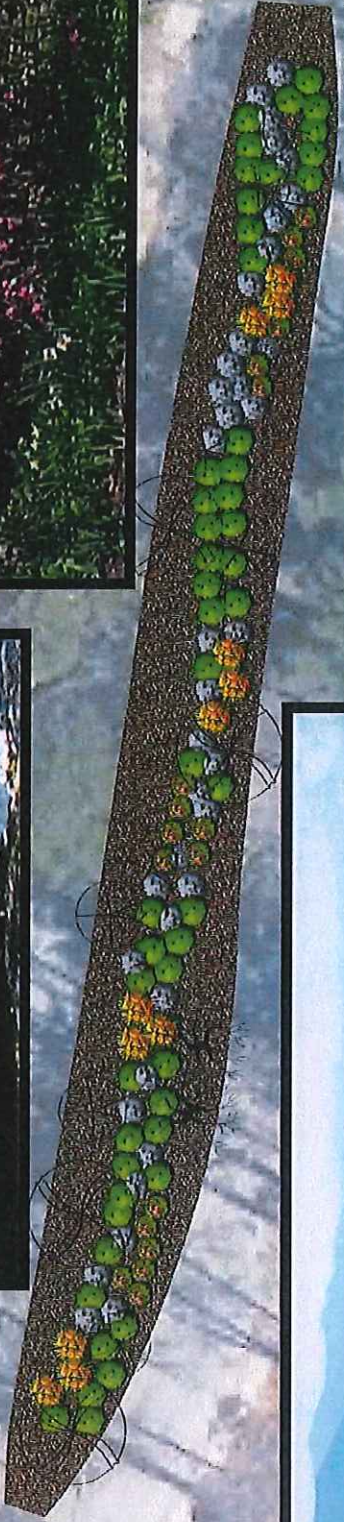
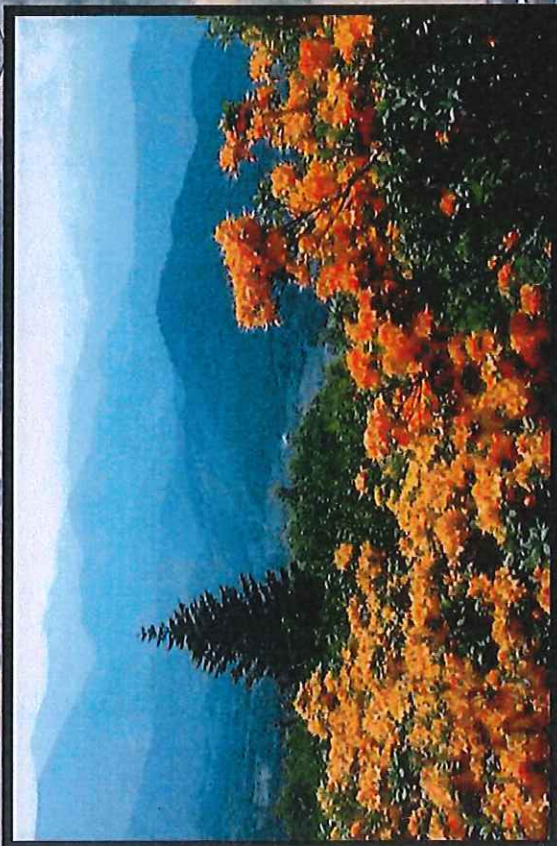
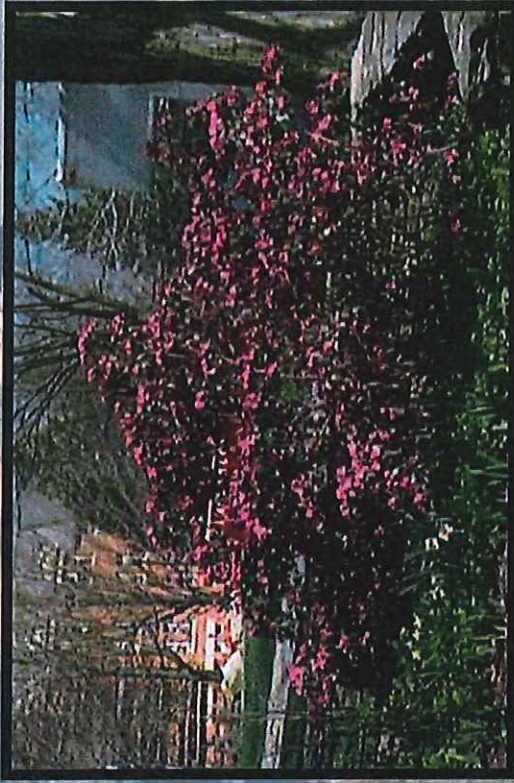
Laurel Lane Median Project
Laurel Lane at Main Street
Blowing Rock, NC 28605

Landscape Planning:

Robert N Oelberg ASLA PA
Tragedy is a sad part of the world. Luck and a bit of the wrong opinion.

783 Little Laurel Rd Ext
Boone, NC 28607
Website: www.oelbergpa.com

(828) 264-4499 (O) (828) 406-8218 (C)
E-Mail: bob@oelbergpa.com



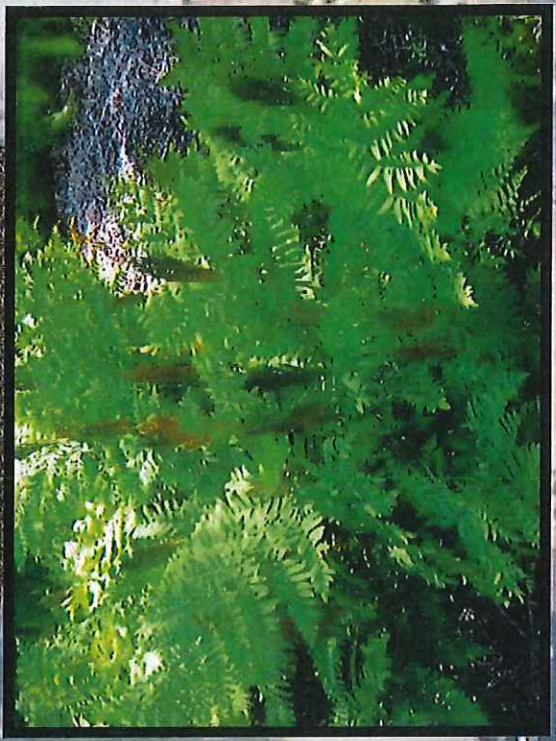
Laurel Lane Median Landscape Plan

Laurel Lane Median Project
Blowing Rock, NC 28605
Laurel Lane at Main Street
January 5, 2017
Scale: 1" = 10' @ 24" x 36" size
This plan is for planting only.



78a Little Laurel rd ext
Boone, NC 28607
Website: www.robbergia.com

Landscaping
Robert N Oelberg ASLA PA
"Strong ideas are a gift of the north light, and they wait for the right response."
E-Mail: bob@robbergia.com
(828) 264-4149 (O) (828) 406-8218 (C)



Laurel Lane Median Landscape Plan

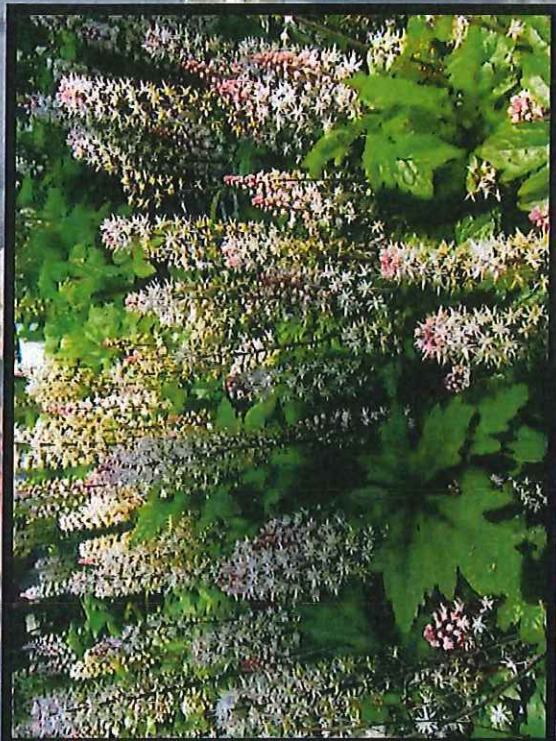
January 5, 2017
This plan is for planting only.
Scale: 1" = 10' @ 24" X 36" size



Laurel Lane Median Project
Blowing Rock, NC 28605

78a Little Laurel Rd Ext
Boone, NC 28607
Website: www.robberglia.com

Robert N Oelberg ASLA PA
Landscape Planning:
Thrive! We're a leader in the industry and a big part of the experience.



Laurel Lane Median Landscape Plan

Laurel Lane Median Project
Laurel Lane at Mason Street
Blowing Rock, NC 28605



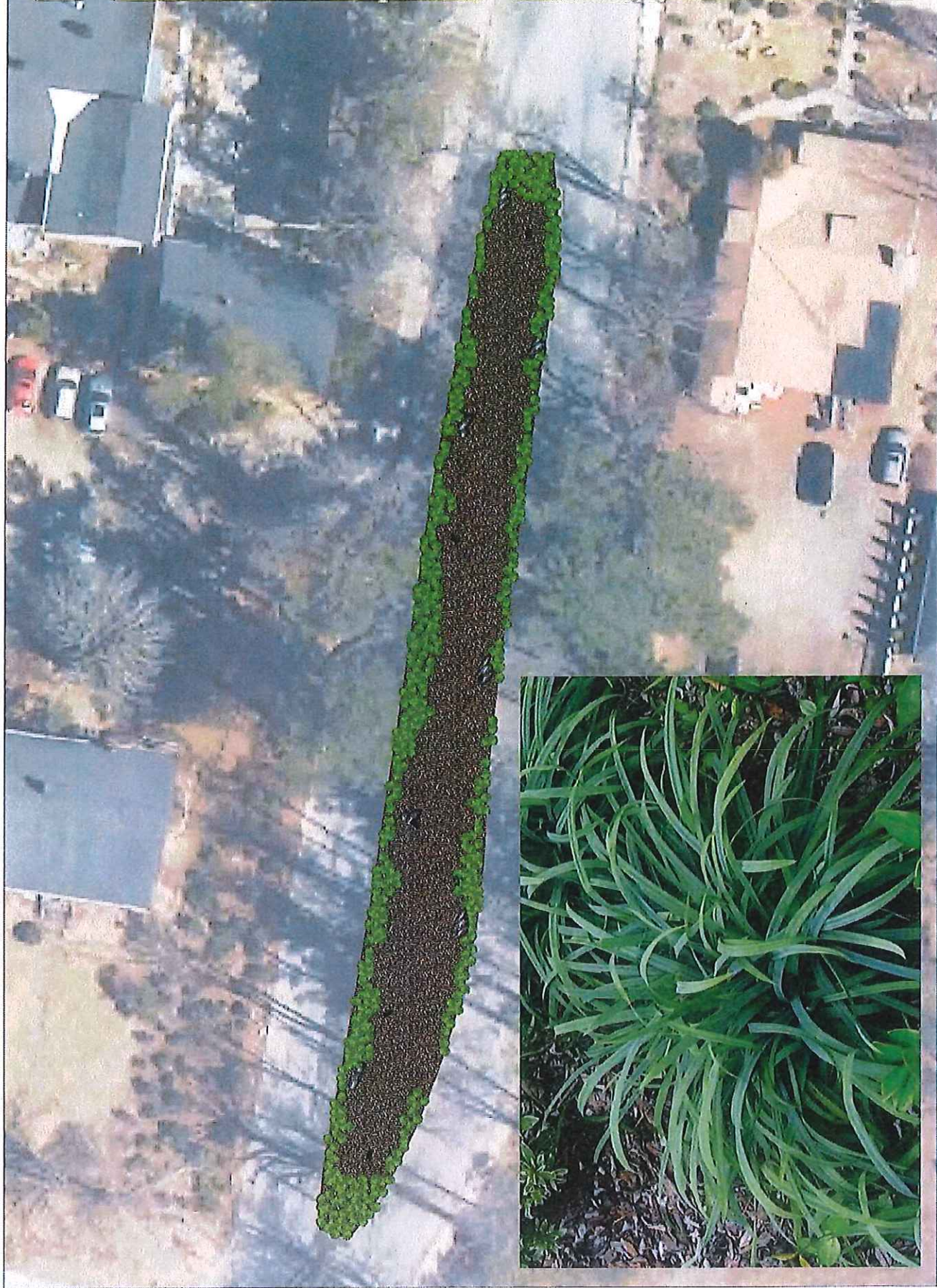
January 5, 2017
This plan is for planting only.
Scale: 1"=10' @ 34" X 36" size

781 Little Laurel Rd Ext
Boone, NC 28607
WebSite: www.oelbergpa.com

Robert N Oelberg ASLA PA
E-Mail: bob@oelbergpa.com
(828) 264-4149 (O) (828) 406-8218 (C)



Landscaping Planning:
"I have a right to the world that is as big as the world is big."



Laurel Lane Median Landscape Plan

February 4, 2017
 This plan is for planting only.
 Scale: 1" = 10' @ 24" x 36" size

Landscape Planning:
Robert N Oelberg ASLA PA
 The art and science of creating beautiful and functional outdoor spaces.
 725 Little Laurel Rd Ext
 Boone, NC 28607
 WebSite: www.oelbergpa.com
 E-Mail: bob@oelbergpa.com
 (828) 264-1419 (O) (828) 406-8218 (C)



Plant Legend				
Symbol	Qty	Common	Botanical	Size
	23	Athyrium filix-femina	Lady Fern	1'
	480	Carex lasiocarpus 'Blue Bunny'	Blue Bunny sedge	Plug 32
	85	Heuchera 'Meister Fire'	Meister Fire coral bells	1'
	65	Heuchera villosa 'Caramel'	Caramel Coral Bells	1'
	34	Helleborus scaberrimus	Oxitch Fern	1'
	45	Osmunda regalis	Royal Fern	1'
	12	Rhododendron calendulaceum	Flame Azalea	24" to 30"
	37	Rhododendron maximum	Rosebay Rhododendron	18" to 24"
	14	Rhododendron maximum	Rosebay Rhododendron	Transplant
	18	Rhododendron P2M	P2M Rhododendron	Transplant
	67	Taraxacum officinale 'Brandywine'	Brandywine foamflower	1 qt.

- 131 Rhododendron P2M
- 132 Rhododendron P2M
- 133 Rhododendron P2M
- 134 Rhododendron P2M
- 135 Rhododendron P2M
- 136 Rhododendron P2M
- 137 Rhododendron P2M
- 138 Rhododendron P2M
- 139 Rhododendron P2M
- 140 Rhododendron P2M
- 141 Rhododendron P2M
- 142 Rhododendron P2M
- 143 Rhododendron P2M
- 144 Rhododendron P2M
- 145 Rhododendron P2M
- 146 Rhododendron P2M
- 147 Rhododendron P2M
- 148 Rhododendron P2M
- 149 Rhododendron P2M
- 150 Rhododendron P2M

- 151 Rhododendron P2M
- 152 Rhododendron P2M
- 153 Rhododendron P2M
- 154 Rhododendron P2M
- 155 Rhododendron P2M
- 156 Rhododendron P2M
- 157 Rhododendron P2M
- 158 Rhododendron P2M
- 159 Rhododendron P2M
- 160 Rhododendron P2M
- 161 Rhododendron P2M
- 162 Rhododendron P2M
- 163 Rhododendron P2M
- 164 Rhododendron P2M
- 165 Rhododendron P2M
- 166 Rhododendron P2M
- 167 Rhododendron P2M
- 168 Rhododendron P2M
- 169 Rhododendron P2M
- 170 Rhododendron P2M