

MEMORANDUM

TO: Mayor Charlie Sellers and the Blowing Rock Town Council

FROM: Kevin Rothrock, Planning Director

SUBJECT: Mast Arm Street Signage for 321/Valley Blvd

DATE: March 6, 2018

As requested by Council attached is lowest quote of \$ 5,723.94 from 4S Sign & Supply for street signage for the mast arms at the signalized intersections on Hwy 321/Valley Blvd. There may be a few adjustments on this price quote but they will be minor as the sign bracket detail is formalized. There are 22 total signs with the appropriate bracket kits specified by NCDOT design load drawings. The signs are approximately 5 feet in length and would be black with reflective white letters. Each sign would be mounted to the face of the mast arms between the traffic signals. Where two different streets intersect with Valley Blvd, two different signs would be mounted on each mast arm. The signs for Sunset Drive and all Valley Blvd signs would also have block numbers posted, if desired.

4S Sign & Supply has been a long-time provider of signage for the Town. Town crews will install these signs once they are delivered.

Attached please find the quote for sign materials, the design loading detail for the mast arms and an example of similar style of sign and mount.

4S SIGN & SUPPLY, INC.

P. O. BOX 393 * GAFFNEY * SC * 29342

Phone 800-898-7867

Fax 888-326-0185

QUOTATION 54715



PLEASE SUPPORT OUR TROOPS

TO: BLOWING ROCK, NC

ATTN: KEVIN

PAGE 2

FROM: MIKE SPEARMAN

DATE: 2/8/2018

PO#: DATE:

QUOTE IN EFFECT FIFTEEN (15) DAYS * ANY CHANGES IN QUANTITY MUST BE RE-QUOTED

Estimated Shipping Date	Shipped Via	FOB Point	Terms	Visit us at
SIGNS 10-15 DAYS/HDW 15-30 DAYS	BEST WAY	SHIPPER	NET 30	www.4ssign.com
Quantity	Description		Unit Price	Amount
22	60"x8"x.080 HIP REFLECTIVE SINGLE SIDE STREET NAME SIGNS (WHITE/BLACK) W/BLACK CAST VINYL ON REVERSE SIDE		\$ 46.00	\$ 1,012.00
22	MAST O BRACKETS KITS		\$ 187.50	\$ 4,125.00
	SUB TOTAL			\$ 5,137.00
	FREIGHT			\$ 225.00
	NC TAX			\$ 361.94
	TOTAL			\$ 5,723.94
	ALTERNATE SIGN MOUNTING HARDWARE			\$ -
22	60"X8"X.080 SIGNS		\$ 46.00	\$ 1,012.00
22	OM100 FIXED OR OM100 ADJUSTABLE BRACKETS		\$ 155.00	\$ 3,410.00
	SEE ATTACHMENT SUB TOTAL			\$ 4,422.00
	FREIGHT			\$ 225.00
	NC TAX			\$ 313.67
	TOTAL			\$ 4,960.67

NC REQUIRES TAX TO BE CHARGED ON FREIGHT

THANK YOU FOR THE OPPORTUNITY TO SUBMIT PRICING.
PLEASE CALL AT ANY TIME WITH QUESTIONS OR IF WE CAN
BE OF ADDITIONAL SERVICE IN ANY WAY.

SUB TOTAL	
** FREIGHT	
TOTAL	\$ -

Mike Spearman

** FREIGHT PRICE CLAUSE **

ALL FREIGHT QUOTED TO CUSTOMERS IS SUBJECT TO CHANGE AFTER A 24 HOUR PERIOD. DUE TO THE DAILY FLUCTUATION IN PRICE QUOTATIONS WE RECEIVE FROM VARIOUS CARRIERS, IT HAS BECOME NECESSARY TO IMPLEMENT THIS POLICY OF POSSIBLE CHANGE IN FREIGHT CHARGES.

Total # of pages including this page ___1___. If you do not receive all pages, please call.

S. MAIN STREET →

← S. MAIN STREET

SKYLAND VIEW DRIVE →

← SKYLAND VIEW DRIVE

VALLEY BOULEVARD

x 8 with block numbers added

SUNSET DRIVE

x 2 with block numbers added

WESTVIEW DRIVE →

← WESTVIEW DRIVE

N. MAIN STREET →

← N. MAIN STREET

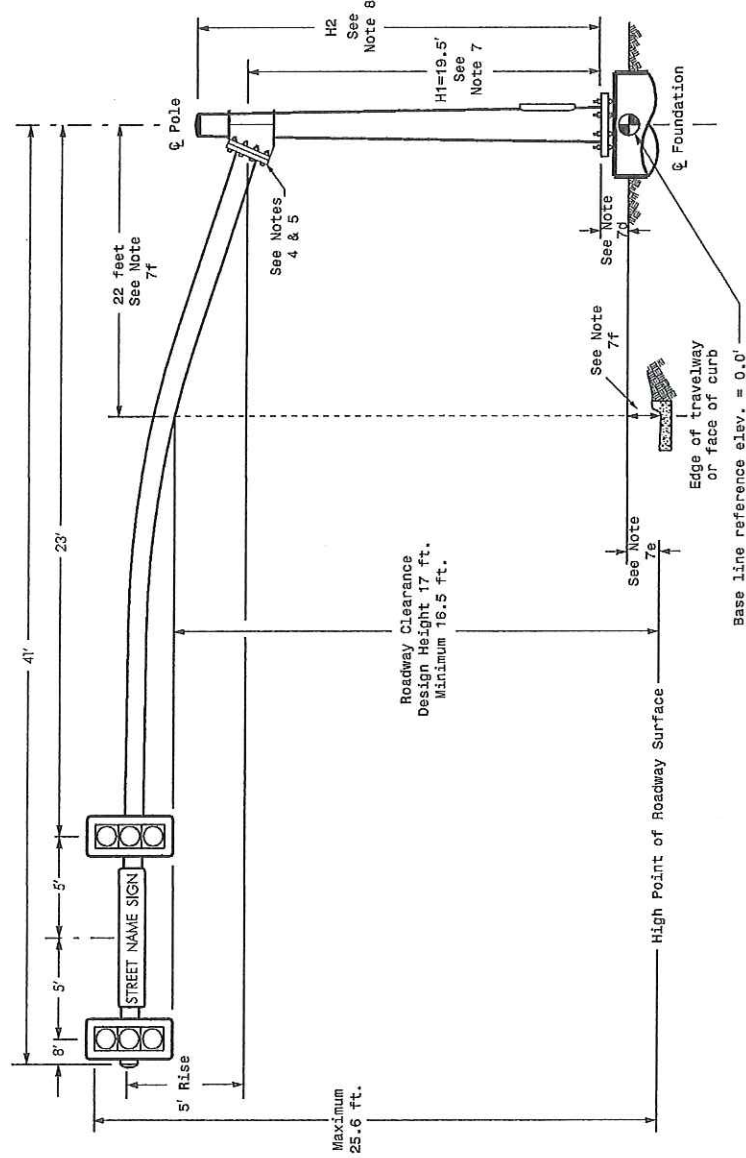
SHOPPES ON THE PARKWAY →

← SHOPPES ON THE PARKWAY

POSSUM HOLLOW ROAD →

← POSSUM HOLLOW ROAD

Design Loading for METAL POLE NO. 1



Elevation View

Design Loading for METAL POLE NO. 2

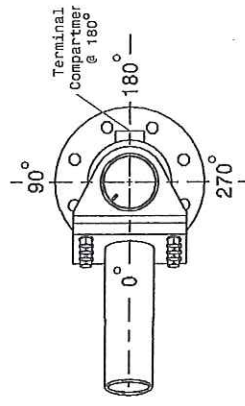


SPECIAL NOTE

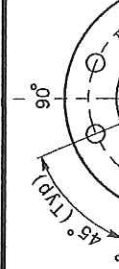
The contractor is responsible for verifying that the mast arm attachment height (H1) will provide the "Design Height" clearance from the roadway before submitting final shop drawings for approval. Verify elevation data below which was obtained by field measurement or from available project survey data.

Elevation Data for Mast Arm Attachment (H1)

Elevation Differences For:	Pole 1	Pole 1
Baseline reference point at ϕ Foundation @ ground level	\oplus	0.0 ft.
Elevation difference at High point of roadway surface		+5.4 ft.
Elevation difference at Edge of travelway or face of curb		+5.7 ft.
		-0.



POLE RADIAL ORIENTATION





LEFT TURN
YIELD
ON FLASHING
YELLOW
ARROW

Patterson St